



MMA PROCESS STATUS

State Phasedown



Rebecca (Goldy) Austen

*Division of Information Analysis and Technical Assistance,
Center for Medicaid State Operations,*

CMS

MMIS Conference Sept, 2008

Nashville, TN



MMA File Exchange Update

Quick Overview



- Production MMA File exchange commenced 1/1/2006 in support of the implementation of the Medicare Part D Drug Program
- 50 States along with the District of Columbia participate
- Until June 2008 each MSA submitted one monthly file of all their dually eligibles



MMA File Exchange Update

Overview Cont'd



- State files are used to determine low income subsidies, auto-enroll into Part D plans as well as calculate monthly Phasedown bills for submitted clients
- CMS returns a response file to states for each submission, containing Medicare eligibility information, including Part D enrollment details



MMA File Exchange Update

What's New beginning June 2008:
Frequency



- State files may be submitted from the 1st thru the end of the month (6pm EST), instead of the 15th of each month til month's end
- State files may be submitted multiple times thruout the month instead of just once a month
 - Submissions may occur daily, weekly, bi-monthly: schedule determined by the individual state to best meet their needs



MMA File Exchange Update

What's New beginning June 2008:
Frequency



- A Response File will be returned to the state for each file submitted
- If state submission arrives by 6pm EST, response sent out next day
- If state submission arrives after 6pm EST, response file sent out within 36 – 42 hours



MMA File Exchange Update

What's New beginning June 2008:
Frequency cont'd



- States may submit a complete file along with smaller update/deletion/accretion files, or weekly files, etc. as long as the monthly current as well as retroactive dual population is processed by CMS by the end of the month
- A complete file should be submitted no more than once a month, supplemental files may be submitted as desired



MMA File Exchange Update

What's New beginning June 2008:

Frequency cont'd

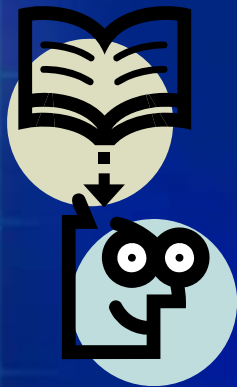


- States may submit the same client multiple times during a given month, last record submitted will count towards Phasedown bill



MMA File Exchange Update

What's New beginning June 2008 :
Content



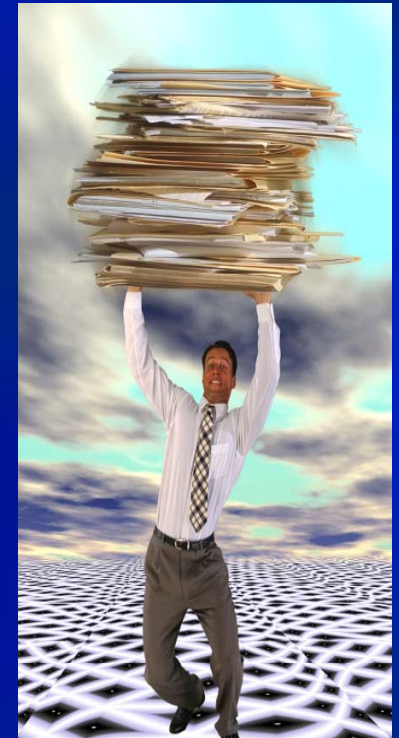
- CMS response files contain more information: detail record expanded to 3,400 (bytes)
 - Additional information includes multiple Part D eligibility date spans, Retiree Drug Subsidy enrollment spans, Incarceration dates, LIS information (Level and source code)



MMA File Exchange Update

What's New beginning June 2008:
Processing

- State information is processed more real time:
 - Low Income Subsidy Deeming runs occur nightly
 - Part D Plan auto-assignments and auto-enrollments occur nightly

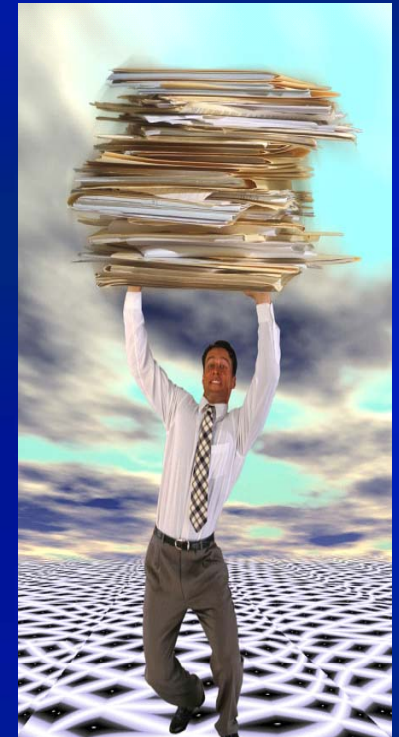




MMA File Exchange Update

What's New beginning June 2008:
Processing

- Plan TRR notifications sent weekly (Saturdays)
- Information available to Medicare Database as soon as file is processed





MMA File Exchange Update

What's New beginning June 2008:
Processing

- State information may include future eligibility records (one month in advance):
 - Future DETail records will carry an eligibility date one month beyond the current submission month





MMA File Exchange Update

What's New beginning June 2008:
Processing

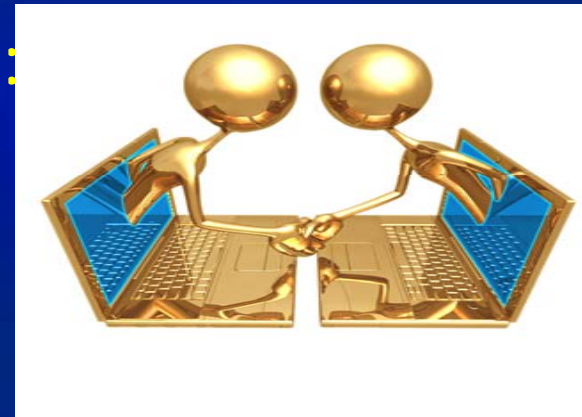
- Future DETail records will be processed with future effective dates, and will not be counted towards Phasedown until the next (appropriate) month





MMA File Exchange Update

What's New beginning June 2008:
Communications



- Initially, State submitted files as well as CMS response files were transmitted via Connect Direct, using the passthru (or store and forward) mechanism of Social Security's network



MMA File Exchange Update

What's New beginning June 2008:
Communications

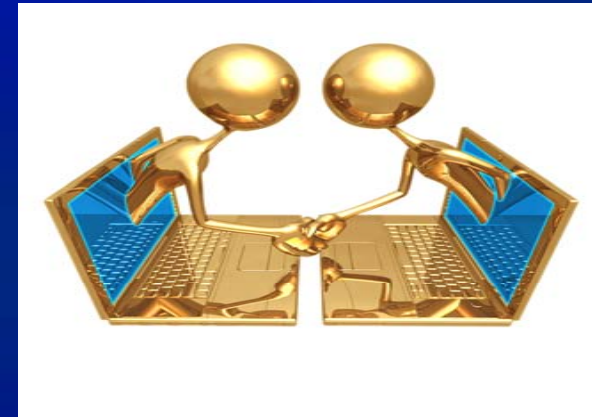


- The Social Security Administration (SSA) is moving to a new electronic file transfer mechanism, no longer supporting C:D, replacing it with another suite of products, projected implementation by June 2009
- CMS is encouraging alternate file transfer mechanisms, such as GENTRAN, which would remove dependency on SSA's network



MMA File Exchange Update

What's New beginning June 2008:
Communications



- Several states have already moved to **GENTRAN** as their transfer mechanism for MMA as well as other CMS related file transfers



MMA File Exchange Update

What's New beginning June 2008:.....

Communications

- CMS will work with each state towards file transmission alternatives
- For your state's options, please contact

Gordon Mundy at

gordon.mundy@cms.hhs.gov ,

410-786-0494

or

Sherry Wilke at sherry.wilke@cms.hhs.gov ,

410-786-0455





MMA FILE EXCHANGE:

For assistance contact:

For general or MPR report related questions/concerns:

Carolyn Lawson at
carolyn.lawson@cms.hhs.gov
410-786-0704

For technical or data issues, as well as GENTRAN information:
Rebecca (Goldy) Austen at
rebecca.austen@cms.hhs.gov
410-786-6450





We Welcome your questions, concerns and suggestions!

THANK YOU.

