



State of North Dakota Member Integration Case Study

North Dakota Member Integration

Jenny Witham – ND DHS IT Director

- Background
- Key partners

Kyle Forster – ND ITD Software Architect

- Member Integration
 - Objectives
 - Architecture
 - Master Client Index

North Dakota



Population: 640,000

Land area: 70,000

Average Daily Temp: 40 degrees

July average: 70

January average: 10

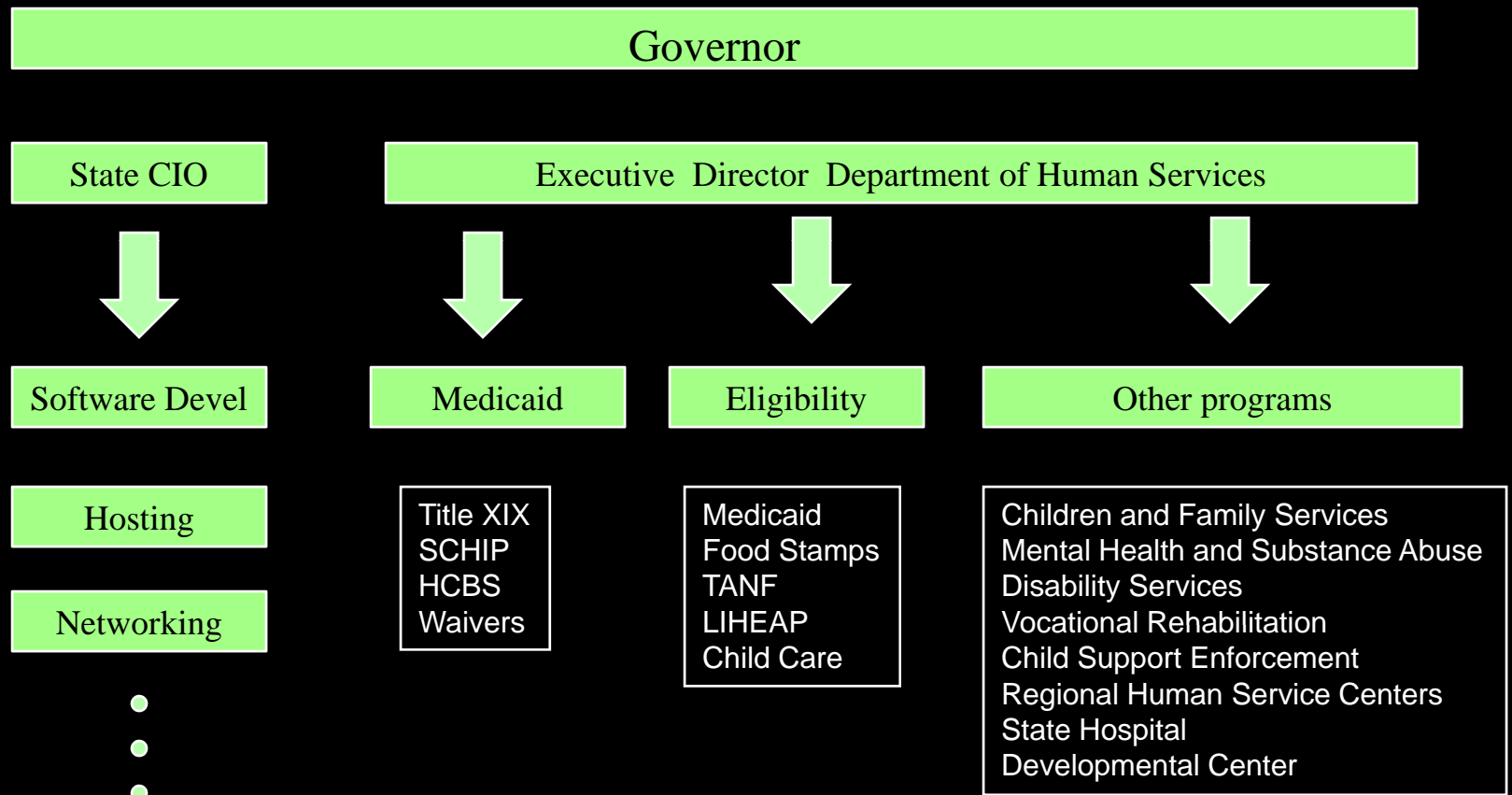
West – coal and gas

Central/East – agriculture

Medicaid population: 55,000

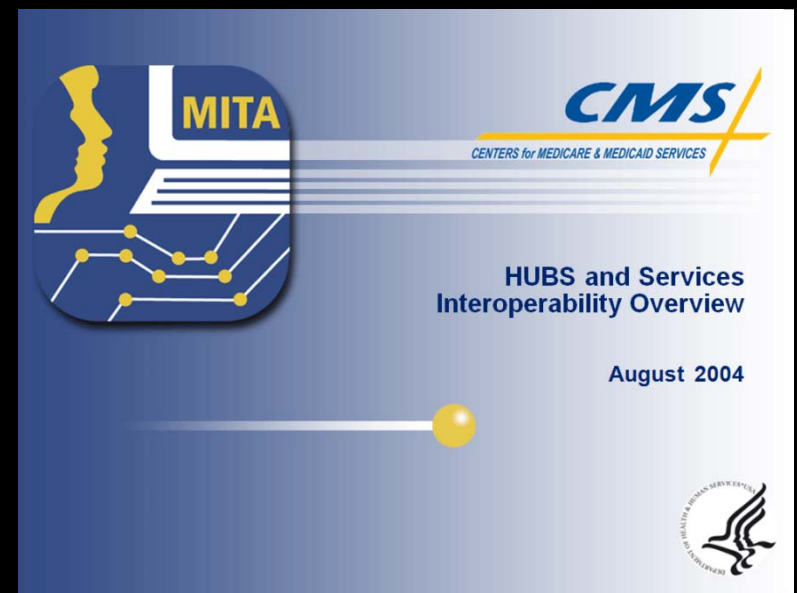


Human Services in ND



Background – 2004 MITA Early Adopter

- **MMIS / POS / DSS**
 - RFP released June 2005
 - Prior to MITA 2.0
 - Required SOA
 - State operated
- **Master Client Index**
 - RFP released Feb 2007



From 2004 to now

- Key partners
 - Focus on interoperability / reuse
 - Standards based



Master Client Index

- Current Implementation:
 - Medicaid – Eligibility and enrollment/member management
 - Food Stamps
 - TANF
 - Children and Family Services
 - Child Protection Services
 - Case management / in home treatment
 - Foster Care
 - Child Support Enforcement
 - Developmental Disabilities
 - Vocational Rehabilitation

MCI - Future Directions

- Human Services
 - Behavioral Health
 - Health Information Exchange
- Other agencies – statewide initiatives
 - Education
 - Commerce
 - Criminal Justice

Member Integration

- Integration Objectives
- Integration Architecture
 - Legacy Eligibility Systems
 - DHS Services Hub
- Master Client Index
 - Enterprise Implementation
 - DHS Services Hub
 - DPI Free and Reduced Lunch Direct Certification

Integration Objectives

- Utilize Service Oriented Architecture
- Loosely couple legacy member eligibility systems and the new MMIS
- Capture and store member enrollment event data within eligibility systems as eligibility workers determine member eligibility
- Send member enrollment event data to new MMIS near real-time to accommodate real-time adjudication of claims
- Reuse integration processes with new eligibility systems (future)

Integration Architecture

➤ Legacy Eligibility Systems

- Client/Server
- IBM Mainframe
 - CICS Cobol
 - Databases
 - ❖ ADABAS
 - ❖ DB2
- Eligibility Event Data Store
 - Capture and store member eligibility information within the same database transaction

Integration Architecture

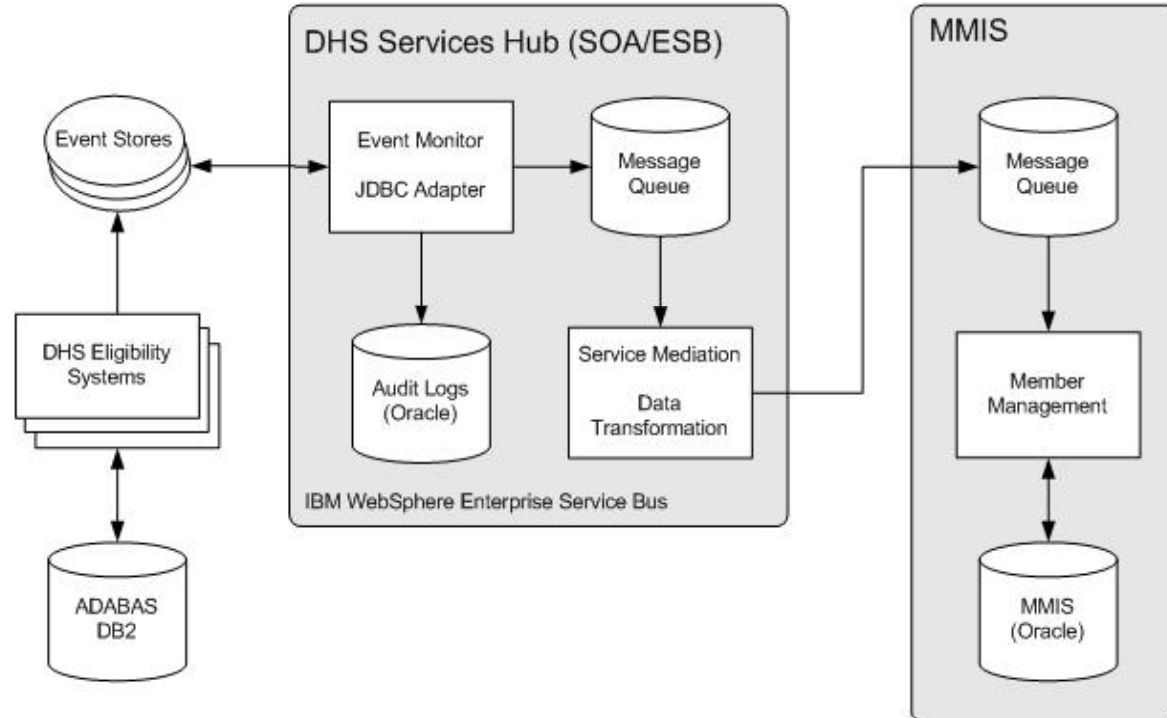
➤ DHS Services Hub

- Enterprise Service Bus
 - IBM WebSphere Process Server
 - ESB Adapters
 - ❖ JDBC
- Data Transformations
- Message Queues

Integration Architecture

MMIS Integration Architecture

Legacy Eligibility to New MMIS



Master Client Index (MCI)

➤ North Dakota Statewide Implementation

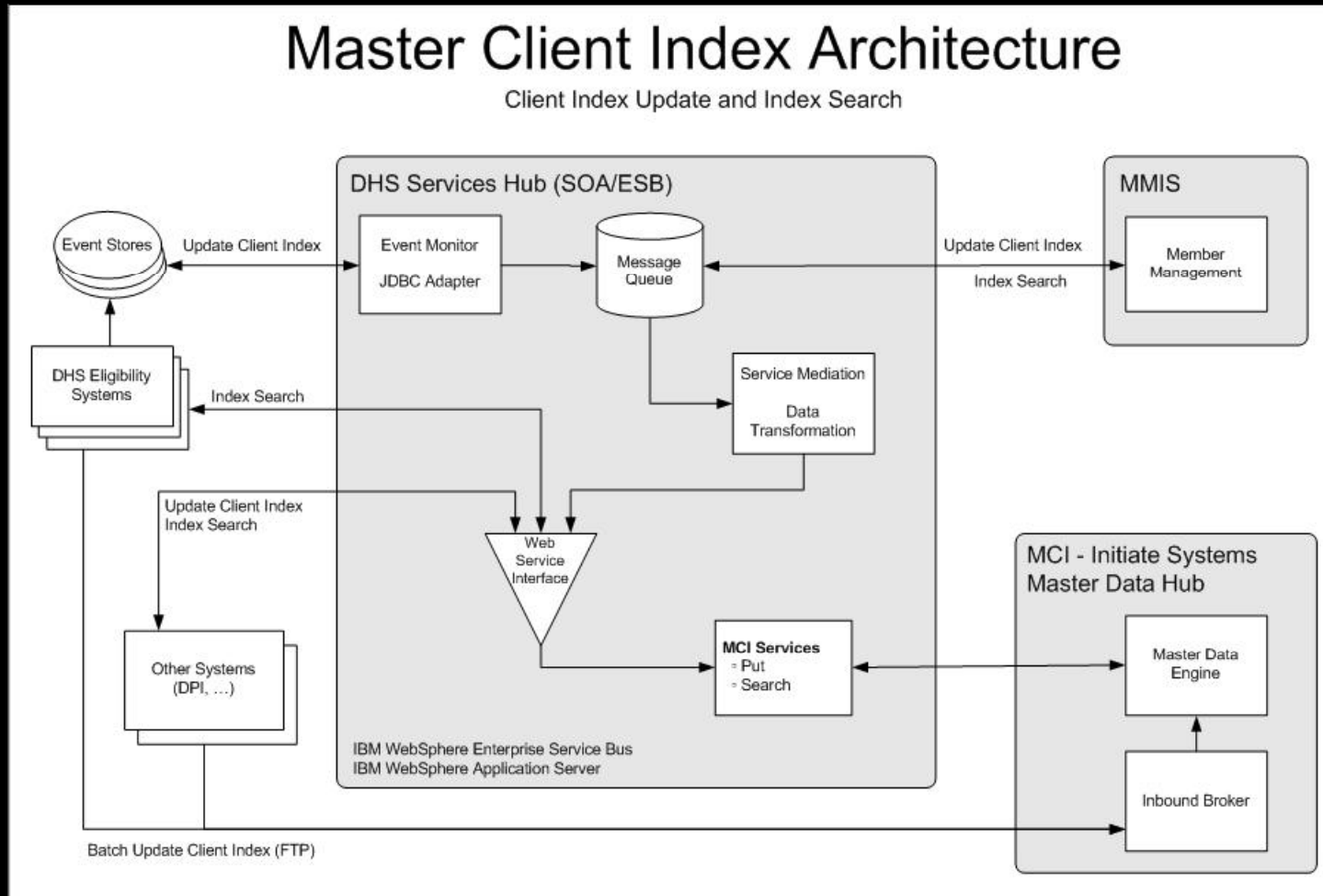
- Initiate Systems Master Data Hub 8.1
- Ability To Restrict Access to Specific Data Sources and/or Member Attributes
- Developed Reuse Services
 - Indexing
 - Searching
- Capture and store member demographic changes within the same database transaction

Master Client Index (MCI)

➤ DHS Services Hub

- Create Services using Master Data Hub API's
- Index Member Information (new/updated)
- Search Member Information
 - Member Most Current Attribute (MMCA)
 - Returns Member Records Linked as Entities
 - Data Hub Filters Records/Attributes Based on Security

MCI Architecture Diagram



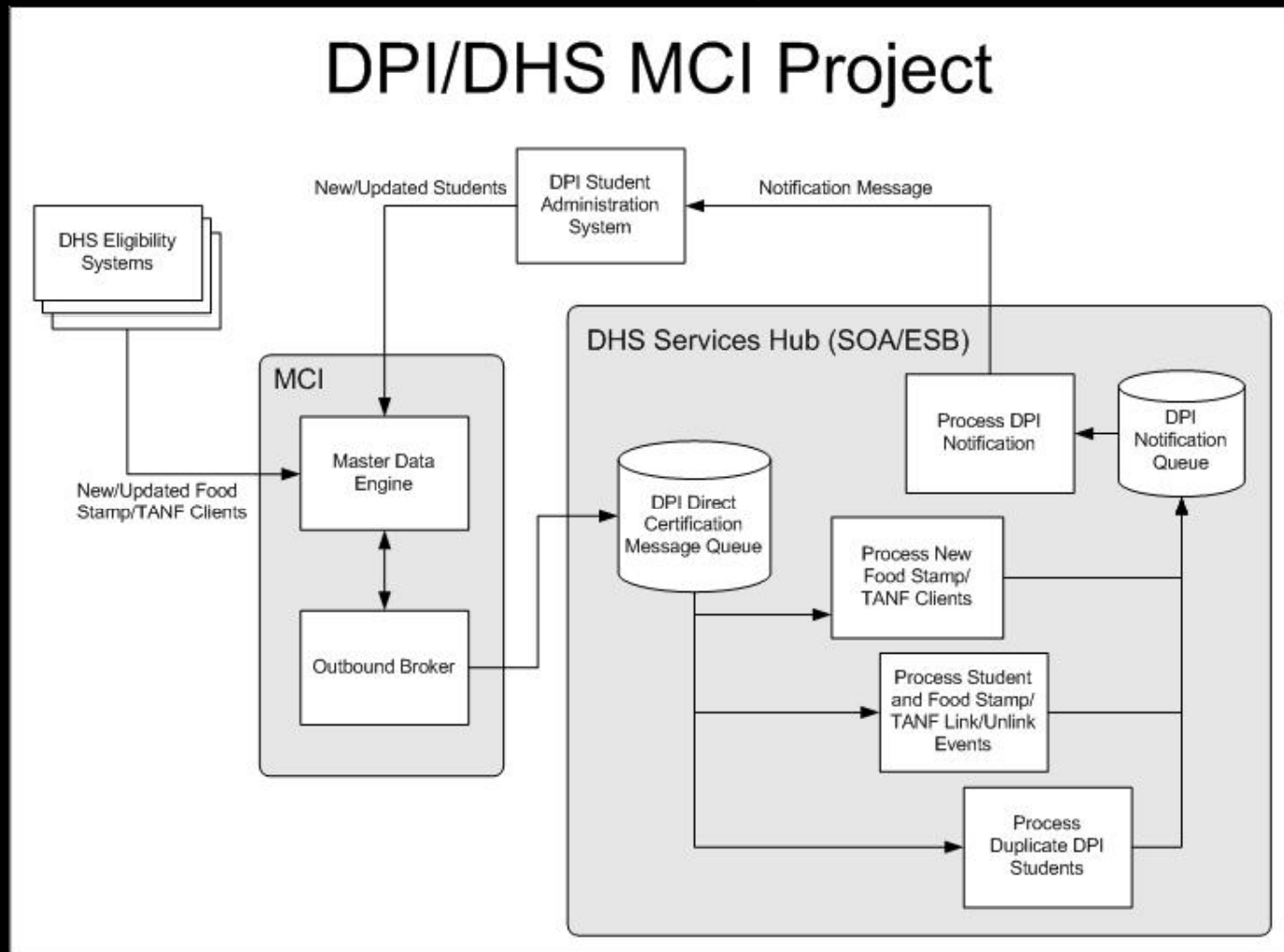
DPI/DHS MCI Project

- Direct Certification for Free and Reduced Lunches for Department of Public Instruction students who receive DHS Food Stamp and/or TANF benefits
- Index DPI students into the MCI
- MCI matches and links DPI students with DHS Food Stamps and/or TANF clients

DPI/DHS MCI Project

- Link Events generate as outbound messages to be processed by the DHS Services Hub.
- DHS Services Hub business process will verify the linked student is currently receiving Food Stamp or TANF benefits. If so, a message is sent DPI to complete the direct certification processing within DPI's Student Administration System.

DPI/DHS MCI Project



Questions



Contact Information

Jenny Witham

Director of Information Technology Services
North Dakota Department of Human Services
jwitham@nd.gov

Kyle Forster

Enterprise Software Architect
North Dakota Information Technology Department
kforster@nd.gov