



CMS

CENTERS for MEDICARE & MEDICAID SERVICES

The Impact of MITA on the APD Process: The Regional Office Role & Perspective

2008 MMIS Conference
Nashville, Tennessee
September 14-18, 2008

Jenny Chen





Impact of MITA on APD Process: What Does This Mean?

- Prior-approval requirements for APDs, RFPs, and contracts in 45 CFR 95 has **not** changed
- Overall content and structure required in APDs per 45 CFR 95 has **not** changed
- Quality of APD content will now be enhanced through MITA SS-A results
- MITA SS-A results will work in parallel with new certification checklists in APD process

Factors Impacting APD Process

- MITA State Self-Assessment: all new APDs after April 1, 2007 must include the results of a MITA SS-A effort
 - APDs must show how proposed DDI effort leads to improved MITA business capability
- Medicaid Enterprise Certification Toolkit: certification checklists are now incorporated into the APD process
 - APDs must include certification requirements



APD Content Enhanced via MITA: What Do I Need to Put in My APD?

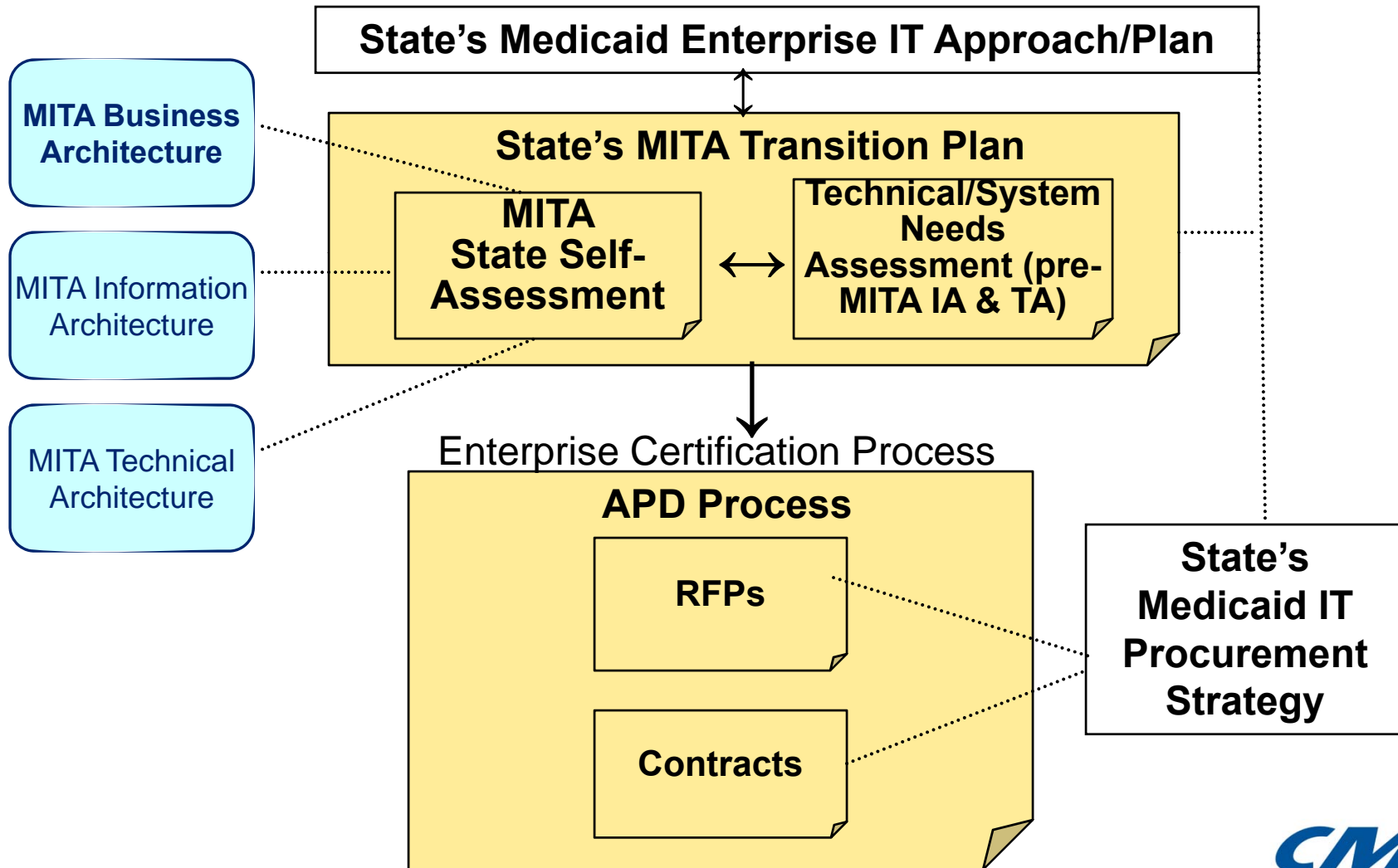
- Requirements Analysis and Definition
 - MITA SS-A aligned with feasibility study and alternatives analysis
 - Proposed requirements and system functionality in APDs, RFPs, and contracts are clearly tied to and flow from the “to-be” business processes and capability levels resulting from MITA SS-A
 - Will be influenced by MITA Information Models and Other State Artifacts in the MITA Repository
- Project Management Plan
 - Medicaid enterprise-level planning
 - State MITA Governance Structure



State's MITA Transition Plan: Working Hand-In-Hand with APD Process

- Overarching plan that all MITA SS-A activity will tie back to
- Living, evolving document
- Should reflect enterprise view of State's Medicaid program
- Should be in line with State's Medicaid IT procurement strategy
- Look for upcoming guidance from CMS' MITA Transition Planning whitepaper

MITA and Enhancement of APD Process: A Regional Perspective



Incorporation of MITA into APD Process: Next Steps for States

- Begin securing resources for MITA SS-A activities
- Begin building MITA SS-A activities into whichever stage of the MMIS system lifecycle your State is at
- Begin making connections between MITA business processes/capabilities and MMIS business and system requirements and documenting it
- Begin dialog early with CMS RO and MITA to get agreement on appropriate steps to take for MITA SS-A activities and APD submissions
- Build flexibility for MITA transition into RFP development
- Provide ongoing feedback to CMS on lessons learned

Applying MITA SS-A at 4 Different Stages in APD/MMIS Lifecycle

- Milestone 1 – Planning Stage
 - MITA SS-A including “as-is” and “to-be”, submit PAPD to CMS RO
- Milestone 2 – Design & Development
 - Document MITA “to-be” state, included with IAPD and/or APDU submitted to CMS RO
- Milestone 3 – Implementation Stage
 - Validate MITA “to-be” state, which will serve as “as-is” state for APDU and/or operations going forward
- Milestone 6 – Operational Stage
 - Document baseline MITA “as-is” state for future APD needs

Enhancing APD Process through MITA SS-A: Benefits from RO Perspective

- Allows for increased standardization in evaluating APDs, RFPs, and Contracts among CMS Regions
- Allows State to demonstrate efforts in incorporating MITA into MMIS planning activities
- Allows State to demonstrate tie between MITA SS-A targeted capabilities to MMIS requirements in APDs, RFPs, and contracts
- Provides better information to CMS on what is being funded in order to carry out its mission
- RO can interpret State planning documents more easily

Role of RO in Transformation of APD Process

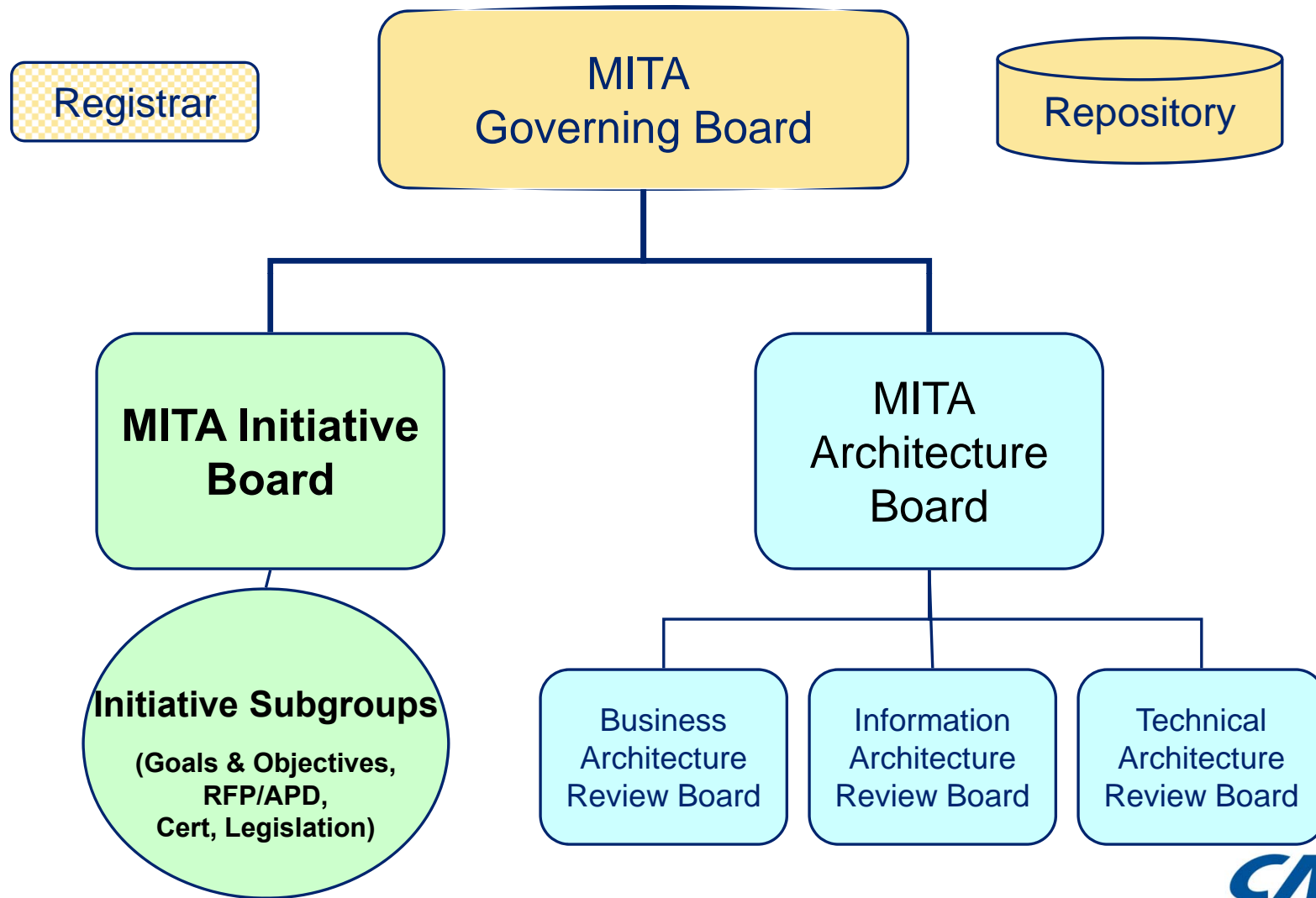
- Incorporation of MITA planning and certification checklists into APD, RFP, and contract reviews
- Interpretation of SMM Part 11 and “effective and efficient administration” criteria in relation to MITA BA
- Defining requirements for how States demonstrate tie between APD/RFP requirements and proposed maturity levels in MITA SS-A
- Evaluate type of MITA SS-A information needed in APDs given State’s current stage(s) of lifecycle
- Provide guidance and TA to State partners
- Evaluation of MITA SS-A results presented in APD against proposed business & system requirements

RO Next Steps and Collaboration with CO

- ROs will work together to develop common APD review criteria and further guidance for States
- Collect State input and models for consideration in guidance development
- Cross-training among ROs and from CO
- Sharing APD models and best practices
- MITA Transition Planning Guidance for States:
 - Incorporation of MITA SS-A activities into APD Process
 - Incorporation of MITA into Procurement and RFP development
- RO activities will feed into overall MITA Governance structure



MITA Governance Structure



Impact of MITA on APD Process: What's on the Horizon

- Guidance on State MITA Transition Planning
- Revisions to Chapter 11 of the State Medicaid Manual (SMM)
- As MITA IA and TA mature:
 - Future MITA SS-As will include these components
 - Will also feed into requirements for APDs, RFPs, and contracts
- Notice of Proposed Rule Making (NPRM) published for regulatory changes

MITA Considerations In APD Reviews: Example from Region IX

- State reprocurring payment system for personal care and in-home supportive services program for Title XIX benes
- Administered by a sister agency via an Inter-Agency Agreement
- Historically a stand-alone, legacy system with largely no integration with the MMIS
- State had completed the “as-is” portion of stand-alone, enterprise MITA SS-A

Key Conditions for CMS Approval of MMIS Funding in Regional Example

- Integration with existing MMIS under model of “Demonstrable Conceptual Equivalence” per SMM 11225
- Components of new system, via integration with existing MMIS, will result in:
 - Enhancement of existing MMIS functional areas, no duplication of functionality
 - Enhancement of MITA business processes, which will be documented as part of MITA SS-A “to-be”
- Cost Allocation Plan broken down by component and by MMIS functional areas



Goals from the RO Perspective

- Move towards IT planning at Medicaid enterprise level
- Moving away from stove-piped systems
- Documenting improvement in maturity levels and capability in context of MITA BA
- Foundation for transition to higher maturity levels and capabilities in the context of MITA IA and TA
- Win-win for all stakeholders
- Serve as a foundation for improving and refining CMS review criteria and policy

Final Thoughts & Reminders

- Incorporation of MITA into RO APD review will be an iterative process
- No “one-size-fits-all” APD
- States will need to work with ROs even more closely now to ensure everyone’s on the same page
- When in doubt, document your efforts to the best extent practical