



**CMS**

*CENTERS for MEDICARE & MEDICAID SERVICES*

# MITA Conceptual Governance Process

September 27, 2006



# MITA Governance Session Outline

- **Introduction** (Purpose, Goal, Objectives & Scope)
- **Process**
- **Structure**
- **Workflow**
- **Risk Levels**

**Ensure that the MITA initiative and architectures:**

➤ are controlled

➤ remain viable

## **Purpose of MITA Governance**

➤ support the business of the State Medicaid agencies

**while allowing new business needs and technology enablers to be incorporated into MITA.**

- **Maintain Framework specifications:**
  - **Business process specs**
  - **Data model specs**
  - **Service specs**

## **Goals of MITA Governance**

- **Enforce use of approved standards**
- **Ensure continued partnership between CMS and States:**
  - **Incorporate changes with minimal adverse impact on States**
  - **Ensure that business needs drive technology decisions**
- **Ensure a single, approved, “implementable” specification for each artifact in the MITA repository**

- **Patterned after established architecture & governance standards (e.g.: national DSMO models)**

## **● Characteristics of MITA Governance**

- **Uses formal procedures, authority structures (HL7, OMG, CORE.gov)**
- **Associates specifications with levels of maturity**
- **Allows for a level playing field**
- **Provides accountability**

## MITA Initiative

- MITA/MMIS certification processes
- APD/RFP guidelines
- Transition guidelines
- Legislation/regulation analysis
- MITA goals and objectives
- Outreach & education

## MITA Architecture

- Business process specifications
- Business capabilities matrix updates
- Conceptual Data Model
- Logical Data Model
- Technical Function specifications
- Business Service specifications
- Technical Service specifications
- Application Architecture specifications
- Conformance criteria
- State self assessment process
- Data management strategy
- Information standards
- Technical Capability Matrix
- Technical Standards

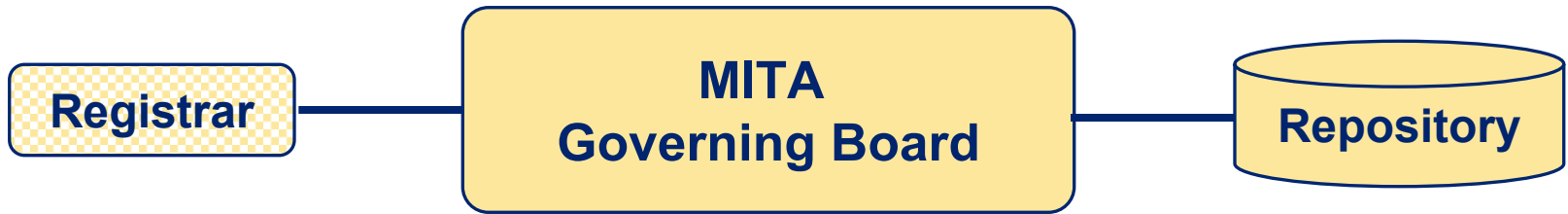
# Scope of MITA Governance

- 
- State unique process, standards, or specifications
  - Implementation details (J2EE vs .NET)
  - Physical information models and data organization
  - Governance structure for State only specs

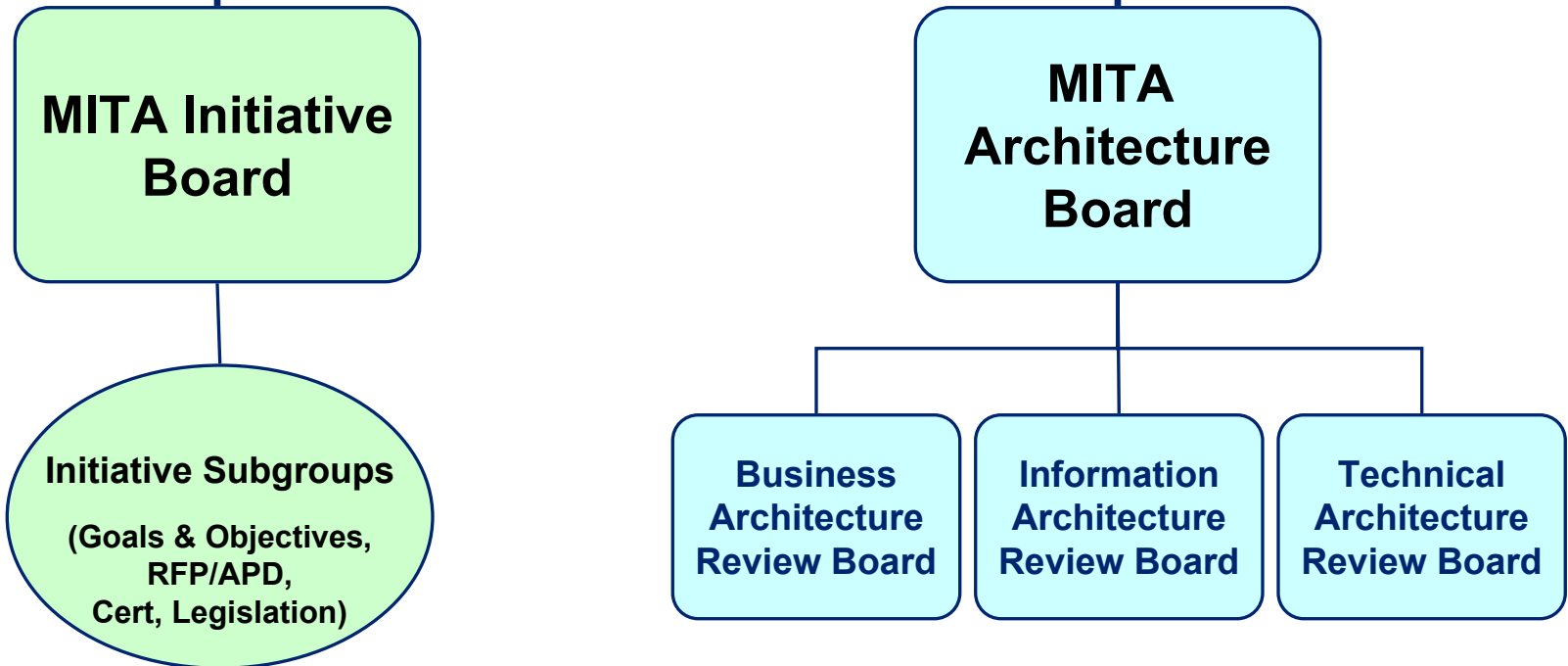
- **Governance Process manages the development of specifications for both the MITA Initiative and the MITA Architecture**

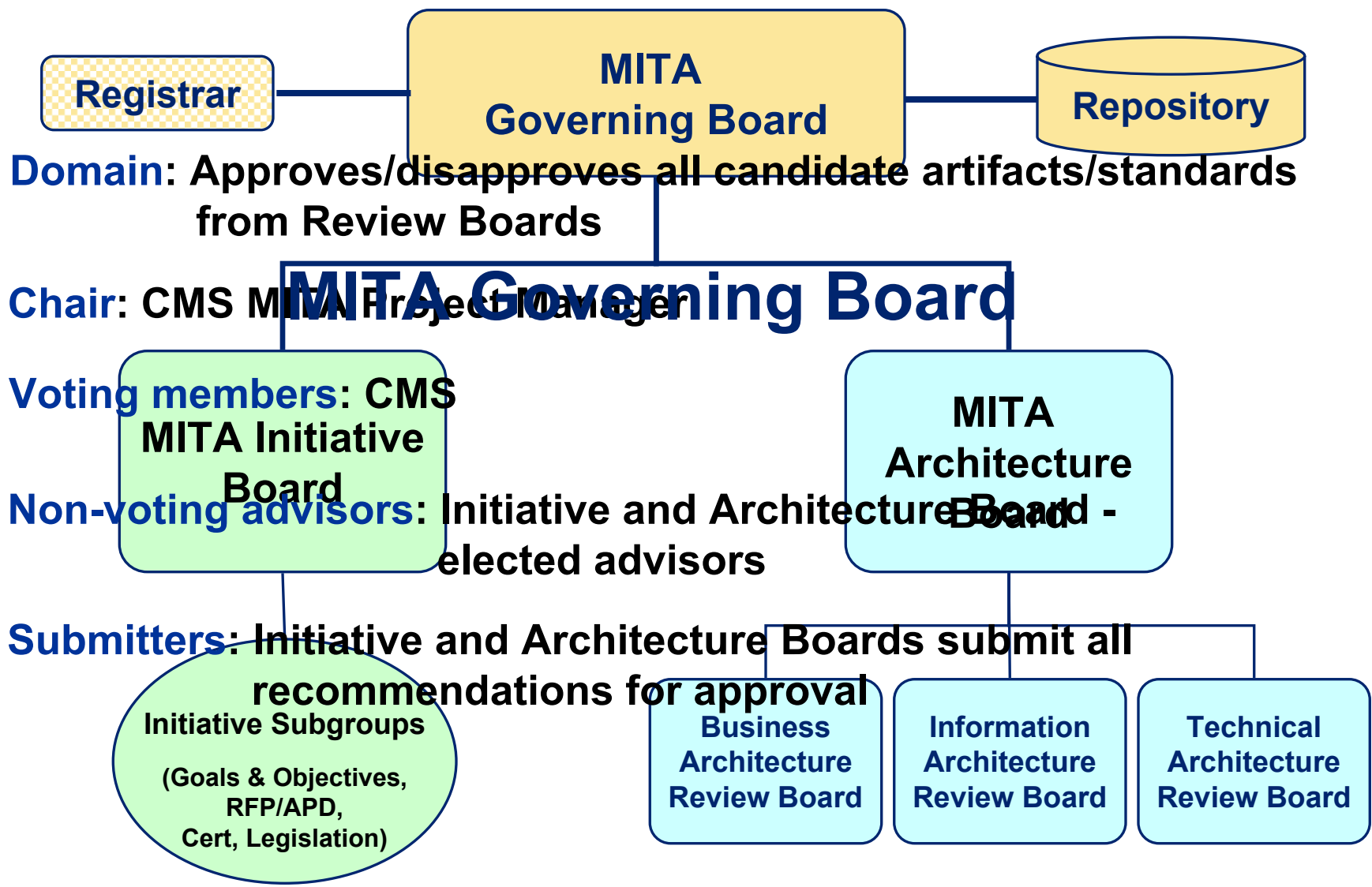
## **MITA Governance Process**

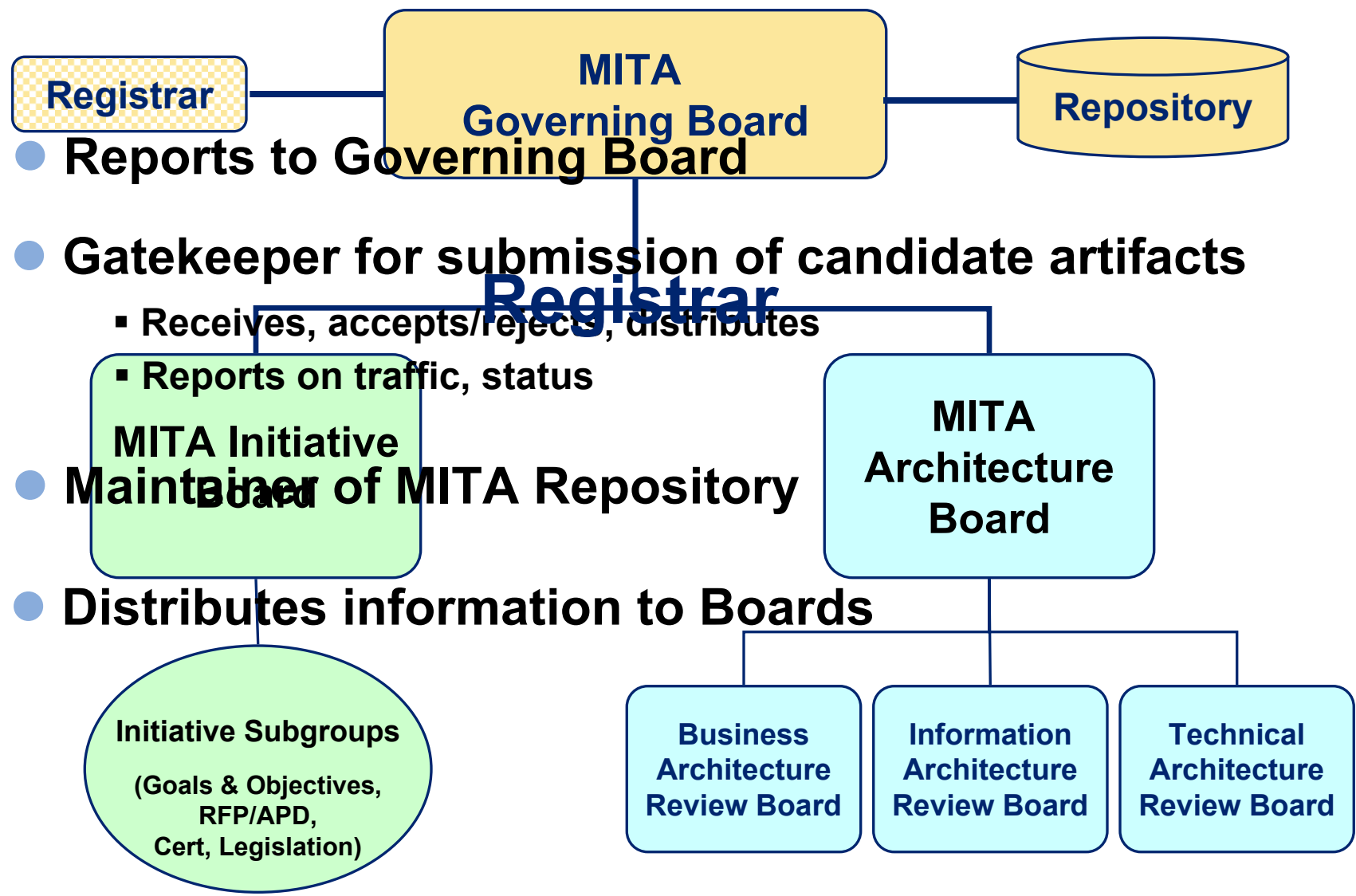
- **Overall Responsibility for the Governance of MITA falls on CMS with significant participation from States and industry**
- **Process is proactive in scanning the Medicaid landscape for potential changes to the MITA Initiative and Architecture**
- **Process is designed to allow for MITA growth**



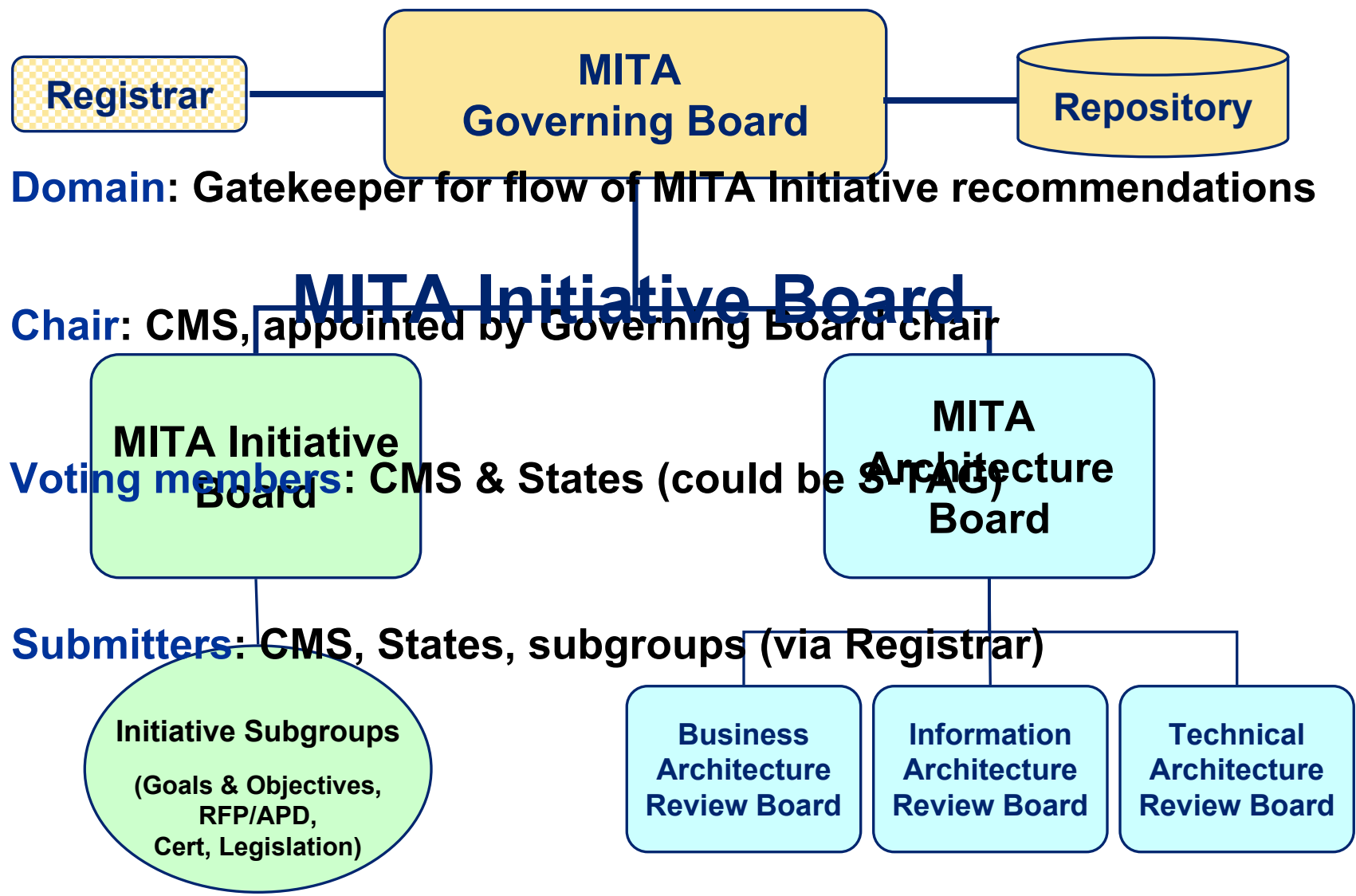
## MITA Governance Structure



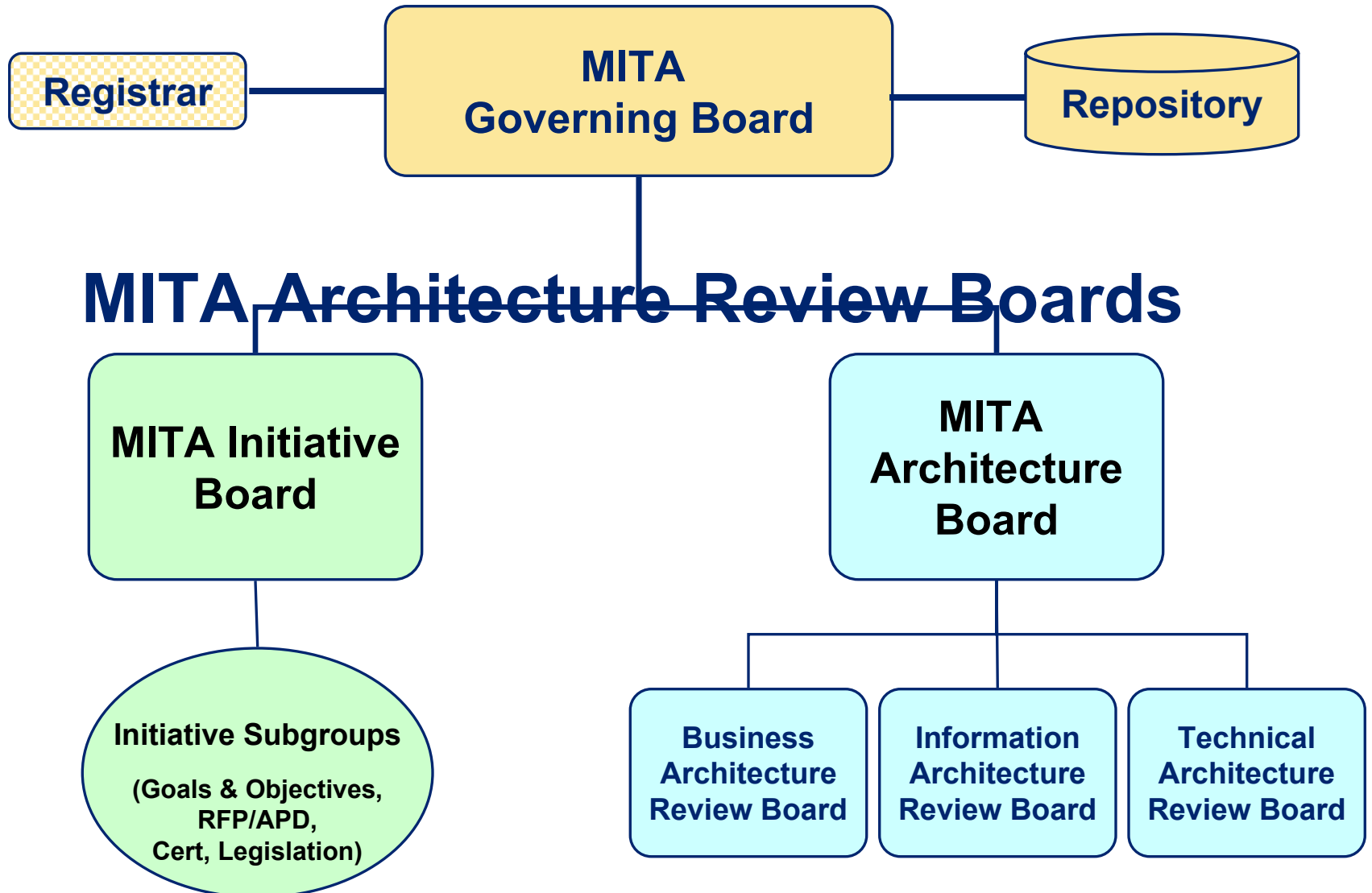


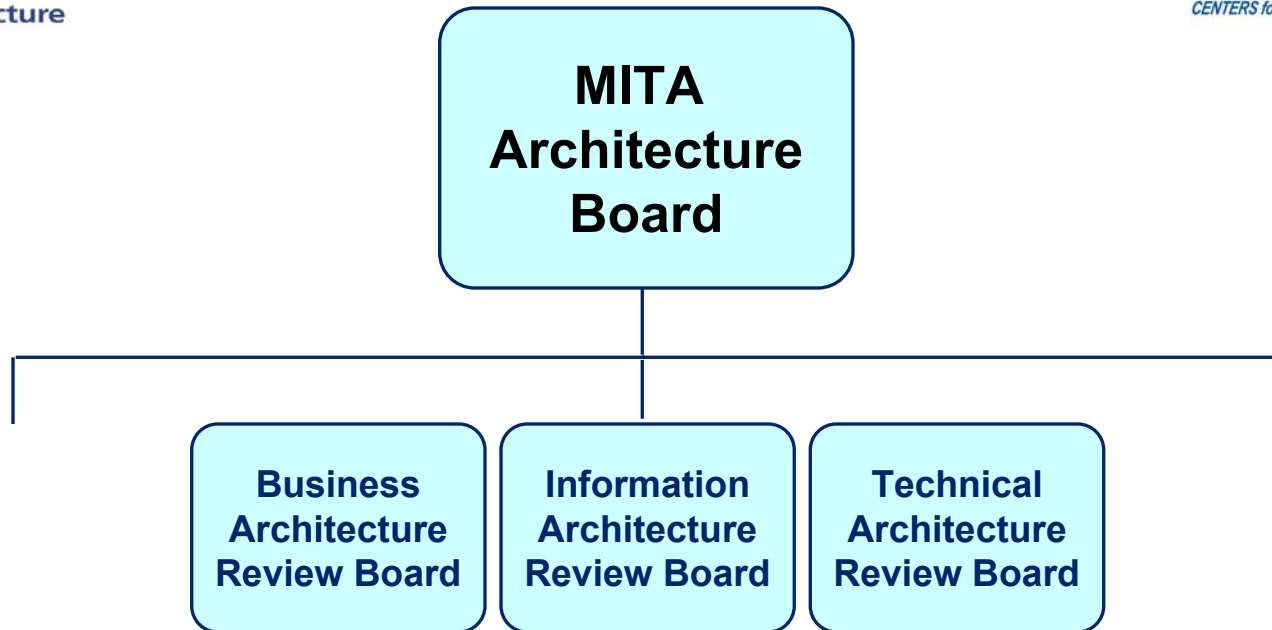


- Reports to Governing Board
- Gatekeeper for submission of candidate artifacts
  - Receives, accepts/rejects, distributes
  - Reports on traffic, status
- Maintainer of MITA Repository
- Distributes information to Boards









- **Business Process Specs**
- **Business Capability Matrix**
- **S-SA process**
- **Conformance Criteria**

- **Data Models (CDM/LDM)**
- **Vocabulary**
- **Mapping to Standards**
- **Data Management Strategy**

- **Tech Function Specs**
- **Bus. Service Specs**
- **Tech Service Specs**
- **App Arch Specs**
- **Tech Capability Matrix**
- **Tech Standards**

**MITA  
Architecture  
Board**

**Domain:** Analyze, recommend Business Architecture artifacts  
(business process, business capability, conformance criteria)



# **Business Architecture Review Board**

**Chair:** CMS

**Voting members:** CMS & States

**Submitters:** States, CMS (via Registrar)

**MITA  
Architecture  
Board**

**Domain: Analyze/recommend IA artifacts**

**(conceptual data models, business models, logical data definition, data standards)**

**Information Architecture Review Board    Logical Architecture Review Board    Terminology Architecture Review Board**

**Chair: CMS staff**

**Voting members: CMS & States**

**Non-voting members: Industry has a voice**

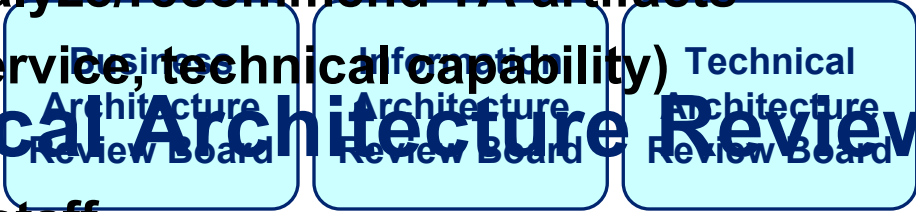
**Submitters: States, CMS, and subgroups (via Registrar)**

**MITA  
Architecture  
Board**

**Domain: Analyze/recommend TA artifacts**

**(business service, technical capability)**

**Technical Architecture Review Board**

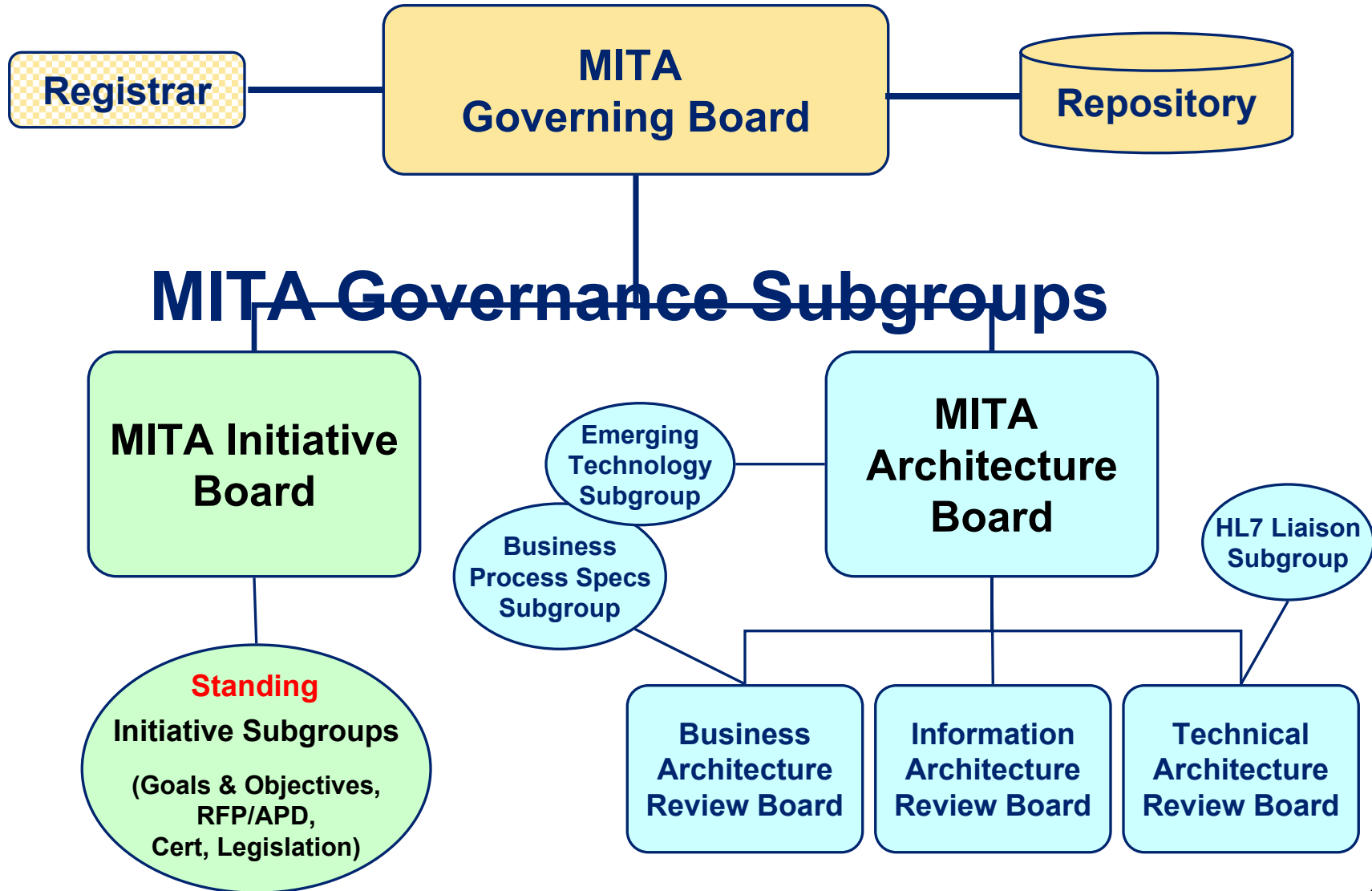


**Chair: CMS staff**

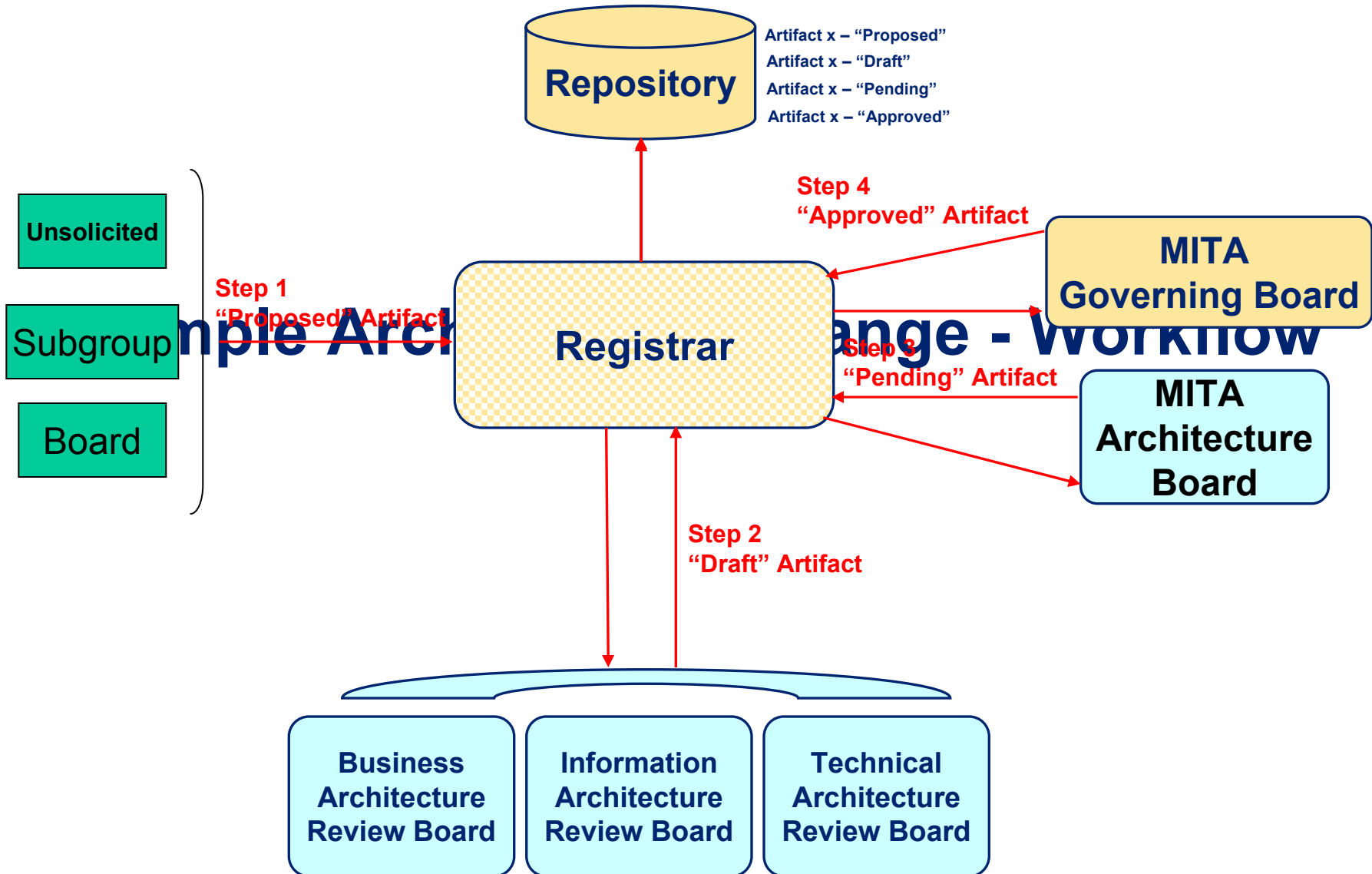
**Voting members: CMS & States**

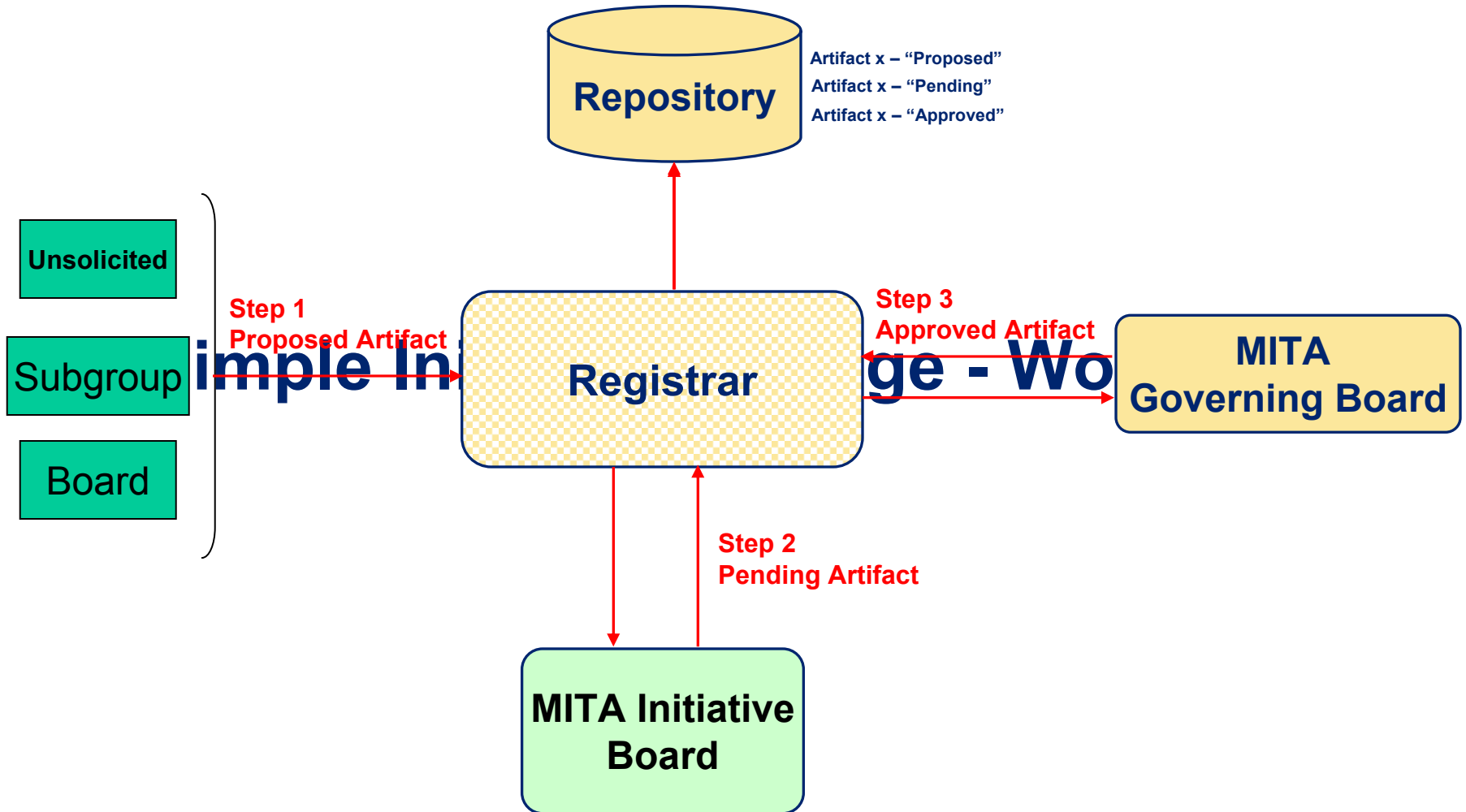
**Non-voting members: Vendors, industry specialists**

**Submitters: States, CMS, and subgroups (via Registrar)**



# Governance Workflow

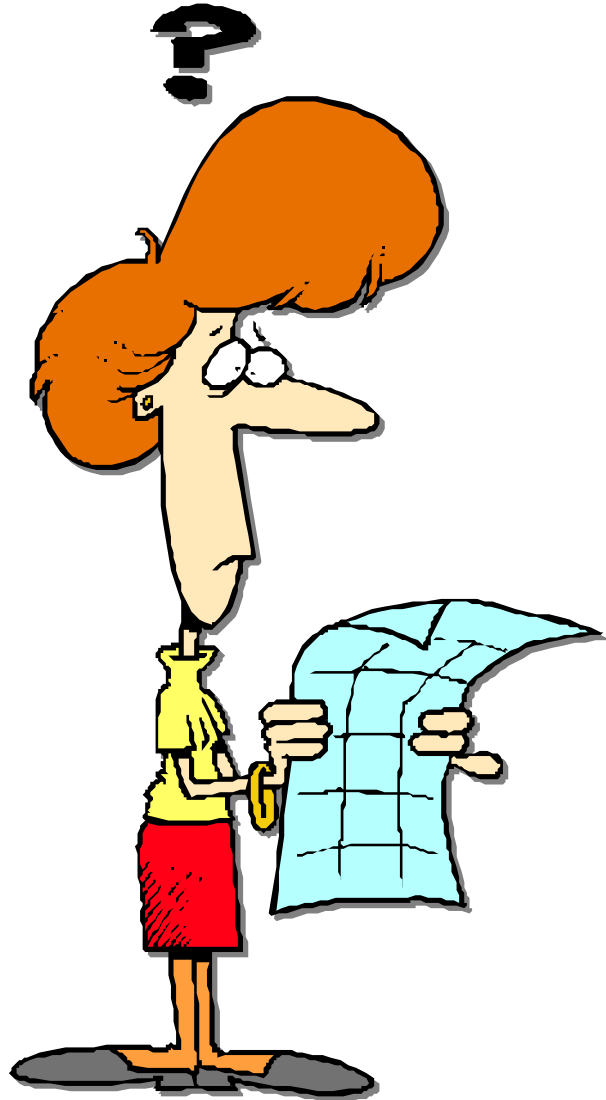




- **Governance process designed to reduce risk to States and vendors:**

- **High risk:** Proposed artifact, not yet reviewed
- **Medium risk:** Draft standard, Review Board recommends adoption
- **Low risk:** Recommended for approved by Initiative and Architecture Boards, pending approval by Governing Board
- **Lowest risk:** Standard approved by Governing Board (ready for use)

## Implementation Risk Levels



# QUESTIONS?